

# ideapad 320

## LIFE JUST GOT EASIER.

Everything about the Lenovo™ IdeaPad™ 320 is designed to simplify your life. It will handle any task with ease, thanks to a powerful AMD processor and discrete graphics options. Preloaded with Windows 10 Home, you'll have the personal assistance of Cortana, designed to help open apps and answer your questions - whether typed or spoken. From the new streamlined design to a cleaner desktop interface, you'll enjoy the simplicity that Lenovo IdeaPad 320 offers. The biggest challenge you'll face is choosing your perfect color.

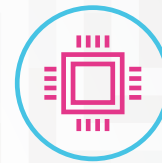


### WHY YOU SHOULD BUY THE LENOVO IDEAPAD 320



#### Style built to last

The IdeaPad 320 features a sleek chassis with angled edges, and is available in six sophisticated tone-on-tone color options: Platinum Grey, Onyx Black, Blizzard White, Denim Blue, Plum Purple and Coral Red. Better yet, the IdeaPad 320 is designed to keep up with you. We treated it with a special protective finish to guard against wear and tear, and added rubber detailing on the bottom cover to maximize ventilation and extend product life.



#### Powerful performance

Top-of-the-line AMD processing, plus up to 16 GB DDR4 memory, guarantee lightning-fast responsiveness. Run multiple programs simultaneously, and transition seamlessly between web tabs—you'll be able to multi-task with ease.



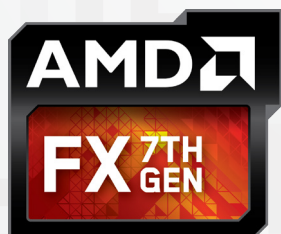
#### Smooth graphics

The IdeaPad 320 offers the option of a powerful AMD Radeon™ 530 graphics card. Discrete graphics cards rely on their own processing power, so you'll experience smoother graphics, less screen tearing and better gaming performance without compromising overall speed and responsiveness. Whether you're playing a game, creating, or editing content, you'll enjoy crisp visuals.



#### Brilliant FHD resolution

The IdeaPad 320 offers up to Full High-Definition resolution in three screen sizes - 14", 15" and 17". Featuring anti-glare technology, you'll enjoy true visual clarity when you watch movies, browse the web and more. (15" model also offers a touchscreen HD option.)



Lenovo™



[WWW.LENOVO.COM](http://WWW.LENOVO.COM)

# ideapad 320

## SPECIFICATIONS

Lenovo IdeaPad 320-14AST\*, Lenovo IdeaPad 320-15AST\*, Lenovo IdeaPad 320-15ABR\*,  
Lenovo IdeaPad 320 Touch-15ABR\*, Lenovo IdeaPad 320-17AST\*, Lenovo IdeaPad 320-17ABR\*

### PERFORMANCE

#### Processor

**320-15ABR, 320 Touch-15ABR, 320-17ABR**

Up to 7<sup>th</sup> Generation AMD FX™-9800P APU

**320-14AST, 320-15AST, 320-17AST**

Up to 7<sup>th</sup> Generation AMD A9-9420 APU

#### Operating System

Windows 10 Home

#### Graphics

Up to AMD Radeon™ 530 Graphics

#### Camera & Microphone

HD (0.3M) Fixed-Focus

CMOS Camera with Single Microphone

#### Memory

**320-15ABR, 320 Touch-15ABR, 320-17ABR**

4 GB DDR4

4 GB DDR4 On-board + Up to 8 GB via Memory Slot

16 GB DDR4

**320-14AST, 320-15AST, 320-17AST**

4 GB DDR4

8 GB DDR4

#### Storage

**320-15ABR, 320 Touch-15ABR, 320-17ABR**

Up to 512 GB SATA SSD; or

Up to 2 TB SATA HDD; or

Up to 128 GB SATA SSD + 1 TB SATA HDD

**320-14AST, 320-17AST**

Up to 256 GB SATA SSD; or

Up to 2 TB SATA HDD

**320-15AST**

Up to 256 GB SATA SSD; or

Up to 2 TB SATA HDD; or

Up to 128 GB SATA SSD + 1 TB SATA HDD

#### Audio

2 x 1.5W Speakers with Dolby Audio™

#### Battery<sup>1</sup>

Up to 5 Hours

<sup>1</sup> All battery life claims are approximate and based on test results using the MobileMark™ 2014 ver 1.5 battery life benchmark test. Actual results will vary, and depend on numerous factors including product configuration and usage, software, operating conditions, wireless functionality, power management settings, screen brightness and other factors. The maximum capacity of the battery will naturally decrease with time and usage. See <https://bapccom/products/mobilemark-2014/> for additional details.

<sup>2</sup> Available only for 15" models.

### DESIGN

#### Display

**320-14AST**

14" HD (1366 x 768) Anti-Glare

14" FHD (1920 x 1080) Anti-Glare

**320-15AST, 320-15ABR**

15.6" HD (1366 x 768) Anti-Glare

15.6" FHD (1920 x 1080) Anti-Glare

**320 Touch-15ABR**

15.6" HD (1366 x 768) Anti-Glare

**320-17AST, 320-17ABR**

17.3" HD+ (1600 x 900) Anti-Glare

17.3" FHD (1920 x 1080) IPS Anti-Glare

#### Dimensions (W x D x H)

**320-14AST**

(mm) : 338.3 x 249.9 x 22.7

(inches) : 13.3" x 9.8" x 0.89"

**320-15AST, 320-15ABR, 320 Touch-15ABR**

(mm) : 378 x 260 x 22.9

(inches) : 14.9" x 10.2" x 0.9"

**320-17AST, 320-17ABR**

(mm) : 418 x 292.6 x 24.9

(inches) : 16.4" x 11.5" x 0.98"

#### Weight

**320-14AST**

Starting at 4.6 lbs (2.1 kg)

**320-15AST, 320-15ABR, 320 Touch-15ABR**

Starting at 4.8 lbs (2.2 kg)

**320-17AST, 320-17ABR**

Starting at 6.17 lbs (2.8 kg)

#### Additional Feature

Touchscreen Option<sup>2</sup>

#### Tone-on-Tone Color Options

**320-14AST**

Platinum Grey; Onyx Black;

Blizzard White; Denim Blue

**320-15AST, 320-15ABR, 320 Touch-15ABR**

Platinum Grey; Onyx Black; Blizzard White;

Denim Blue; Plum Purple; Coral Red

**320-17AST, 320-17ABR**

Platinum Grey; Onyx Black

### CONNECTIVITY

#### WLAN

1 x 1 WiFi 802.11 ac

#### Bluetooth®

Bluetooth® 4.1

#### I/O (Input/Output) Ports

**320-15ABR, 320 Touch-15ABR, 320-17ABR**

1 x USB Type-C™

2 x USB 3.0

4-in-1 Card Reader

HDMI™

RJ45

Audio Jack

**320-14AST, 320-15AST, 320-17AST**

1 x USB 2.0

1 x USB 3.0

4-in-1 Card Reader

HDMI™

RJ45

Audio Jack

### PRELOADED SOFTWARE

- Lenovo App Explorer
- Lenovo Companion 3.0
- Lenovo ID
- Lenovo Settings
- McAfee LiveSafe™ (30-day trial)
- Microsoft Office 365 (30-day trial)



Lenovo™

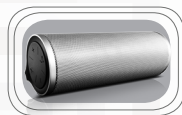
## OPTIONS & ACCESSORIES



Lenovo 300  
Wireless Compact  
Mouse



Lenovo 500  
Extra Bass  
In-ear Headphones



Lenovo 500 2.0  
Bluetooth® Speaker

## LENOVO SERVICES

#### Warranty Upgrades - On-site / In-Home Service

Maximizes PC uptime and productivity by providing convenient, fast repair services in your own home.

#### Accidental Damage Protection

Avoid the hassles of unexpected repair costs. Provides coverage for non-warranted damage incurred under normal operating conditions, such as minor spills, drops or damage to the integrated screen.

#### Warranty Extensions (1-to-3 Years Total Duration)

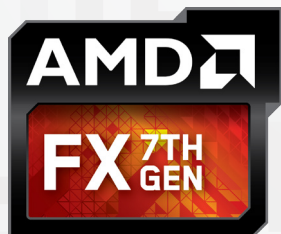
This fixed-term, fixed-cost service helps accurately budget for PC expenses, protect your valuable investment and potentially lower the cost of ownership over time.

\* Example of Lenovo IdeaPad catalogue naming convention



#### AMD platform codes

Kaveri: AKV, Carrizo: ACZ, Godavari: AGR, Bristol Ridge: ABR, Beema: ABM, Carrizo-L: ACL, Bristol Ridge-L: ABL, Stoney Ridge: ASR



WWW.LENOVO.COM

Lenovo reserves the right to alter product offerings and specifications at any time, without notice. Lenovo makes every effort to ensure accuracy of all information but is not liable or responsible for any editorial, photographic or typographic errors. All images are for illustration purposes only. For full Lenovo product, service and warranty specifications visit [www.lenovo.com](http://www.lenovo.com). Lenovo makes no representations or warranties regarding third party products or services. **Trademarks:** The following are trademarks or registered trademarks of Lenovo: Lenovo, the Lenovo logo, ideapad, ideacentre, yoga and yoga home. Microsoft, Windows and Vista are registered trademarks of Microsoft Corporation. AMD, the AMD Arrow logo and combinations thereof are trademarks of Advanced Micro Devices, Inc. in the United States and/or other jurisdictions. Other company, product and service names may be trademarks or service marks of others. Battery life (and recharge times) will vary based on many factors including system settings and usage. Visit [www.lenovo.com/lenovo/us/en/safecomp/periodically](http://www.lenovo.com/lenovo/us/en/safecomp/periodically) for the latest information on safe and effective computing. ©2017 Lenovo. All rights reserved.